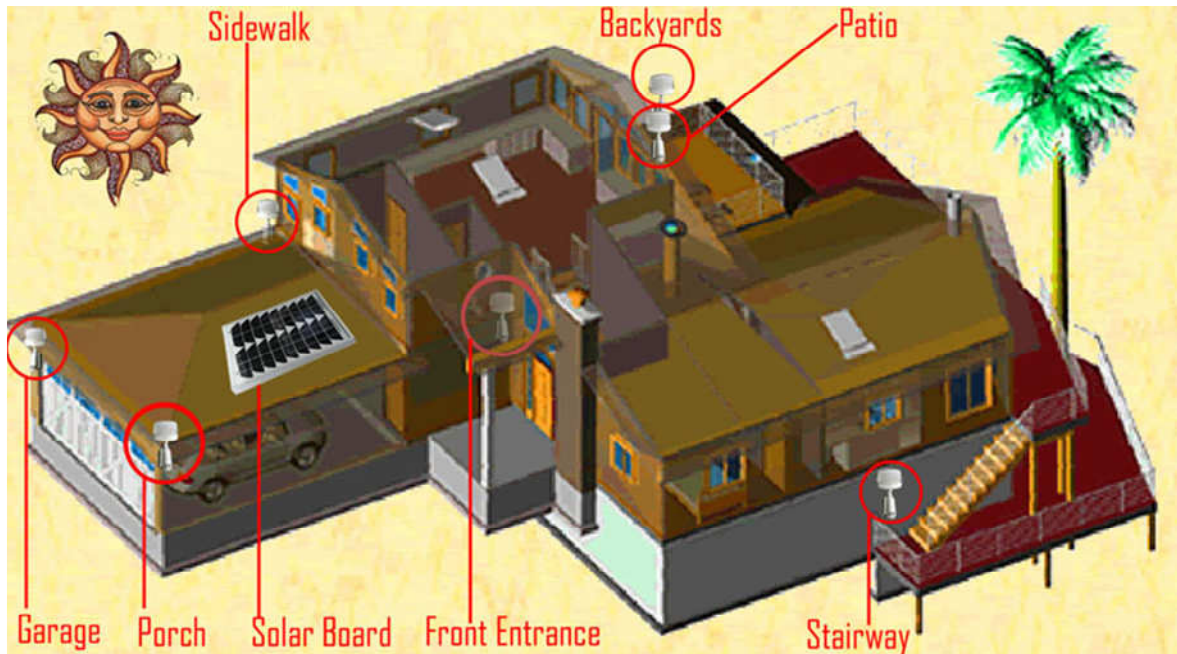
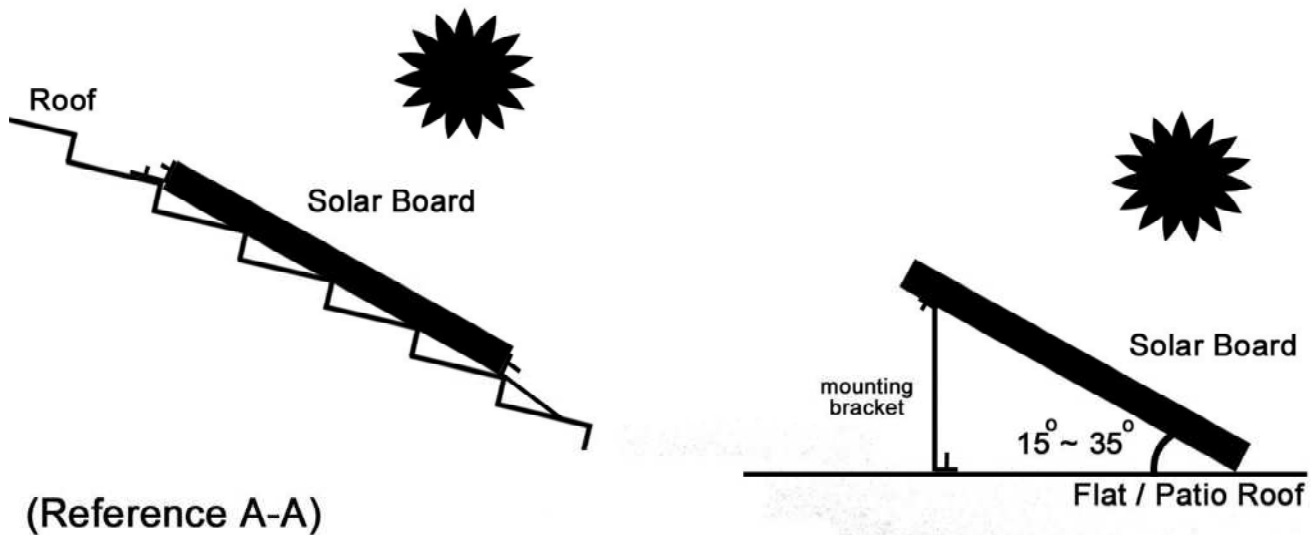


Multi-Units Installation and Setup Guideline:



1. Mount it on the roof or any safe practical location with your own available accessories with mounting bracket (available at any hardware store). Please try to place it at location with maximum sun light exposure period. As possible here strongly suggest it faces to south and tilts up to 15° - 35° . (Reference A-A)



2. Backup power supply (12VDC, 1A), it does not have to be in use all the time (input to A jack on the splitter), unless during real bad weather condition period or area with long winter season, and / or continues cloudy days etc. The Tri-Power management processor will automatically control whole charge systems in between solar power, AC power & Li-Poly battery power in most efficient characteristic.
3. Connection (Reference A-B)
 - a. Can be pre-wiring for new building / house same any low voltage systems.
 - b. For existing building, suggest via house attic space to run the wire to each light location, or under roof water gutter / edges.
 - c. The wire can be extended in use with same or above size (# 18 plus) wire / cable up to 100', but need to make sure with corrected polarity connections (+/-).

